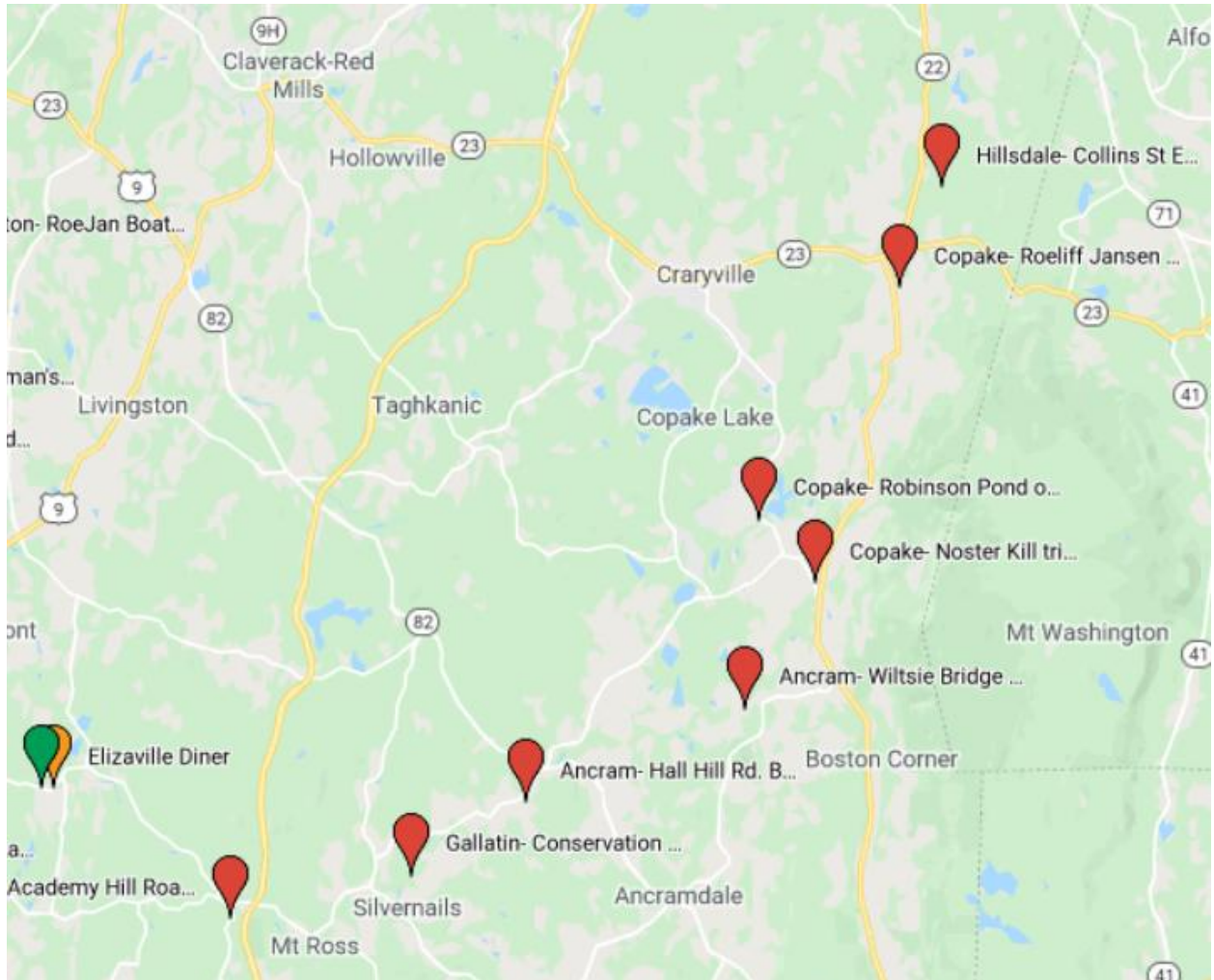


# ROEJAN WATERSHED AN COMMUNITY

## Upstream Sampling Guide



## Sampling Gear:

- In the Kit from Bard:
- Sterile sample containers, one per site plus a few extra
- Rubber gloves, a pair per site plus a few extra. (If both team members use gloves at each site, you will run out.)
- Insulated Backpack. You will also need some reuseable freezer packs, which might be supplied, and which you should put in the freezer before sampling
- YSI Sampling meter and probe, with probe cover
- Dipper, in a protective bag, keep dipper covered when not in use
- Upstream Only: Bucket (for sampling from a bridge), in a protective bag, keep bucket covered when not in use; put nothing but water in the bucket
- Upstream Only: 2 Safety vests (for sampling from a bridge)
- You need to supply:
- If not supplied, you will need freezer packs to keep the insulated backpack cool
- Watch or phone to tell time
- Smartphone, GPS or Map for navigation
- Contact info for Downstream Sampling team
- Helpful
- Permanent marker (sharpie) and good pen
- Clean cloth or dishtowel to clean up after each collection

Note that the bucket is only used for sampling from bridges.

Wear comfortable outdoor clothing, light boots for walking on rocks, and be tick-aware.

**Don't do any site where the approach looks dangerous to you.** Several approaches are over large riprap rocks, and if it is raining or has rained, and you don't feel comfortable going down, just write that in the comment and go to the next site.

## STEPS TO FOLLOW WHEN COLLECTING WATER

1. Write the time in the sampling log
2. If not already connected, connect the YSI probe to the meter, ensuring the twist lock is tight. Don't use force, it fits together smoothly.
3. Turn on the YSI meter, and **be sure to remove the rubbery probe cover.**
4. No matter how you are sampling, **look for clear moving water, and collect water coming towards you.**
5. Place your observations in the log book, such as cloudy water, tide ebb/flow on Hudson shoreline sites, or anything else of note.

<p><b>Sample from shore with the Dipper</b></p>	<p><b>Sample with the Bucket from a Bridge</b></p> <p>You need 18" or more of depth. If too shallow, sample with dipper or by wading out.</p>
<p>Put on gloves. Don't touch anything with your gloved hand but the bottle and dipper until collection is complete.</p>	<p>Put on gloves. Don't touch anything with your gloved hand but the bottle and bucket until collection is complete.</p>
<p>Find good footing on the streambank, within 3-4' of clear running water. Uncap the bottle.</p>	<p><i>Both samplers should wear the safety vest.</i> Watch for oncoming traffic. Have your partner slow traffic. Use the line on the handle to raise lower the bucket, and the line on the bottom to tilt.</p> <p>TIP: You can see the bucket better on the downstream side of the bridge.</p>
<p>Rinse the dipper at least 3X in the running water. Don't touch the bottom. Dip water from beneath the surface, pour into bottle, and repeat 3X, discarding the first two fills and then keeping the 3rd one.</p>	<p>Rinse bucket in running water. Fill and dump. Fill and bring up, and set it down. Take the cover off the YSI probe, and then dip it into water to the top of the strain relief, wait for the readings to stabilize, then have partner write oxygenation (2 readings), conductivity (2 readings, comp and uncomp) and temperature in the log. Add notes on water clarity, flow, weather, waves, or other items of note.</p>
<p>Leave air in neck of bottle, cap and place in insulated backpack.</p>	<p>Lower bucket, rinse again, bring it up again and set it down. Dip bottle in bucket and discard, dip again and discard, dip and keep. <i>Collect from fresh water; do not collect water contaminated by the probe.</i></p>

<p>Loop YSI cable loosely around hook on the end of the dipper, lower it into the water to the top of the strain relief, wait for the reading to stabilize, then have partner write oxygenation (2 readings, mg/l and %), conductivity (2 readings, comp and uncomp) and temperature in the log. Add notes on water clarity, flow, weather, waves, or other items of note.</p>	<p>Leave air in neck of bottle, cap and place in insulated backpack</p>
<p>Turn off meter. Put dipper in protective bag. Discard gloves.</p>	<p>Turn off meter. Put bucket in protective bag. Discard gloves.</p>

**Don't do any site where the approach looks dangerous to you.** Several approaches are over large riprap rocks, and if it is raining or has rained, and you don't feel comfortable going down, just write that in the comment and go to the next site.

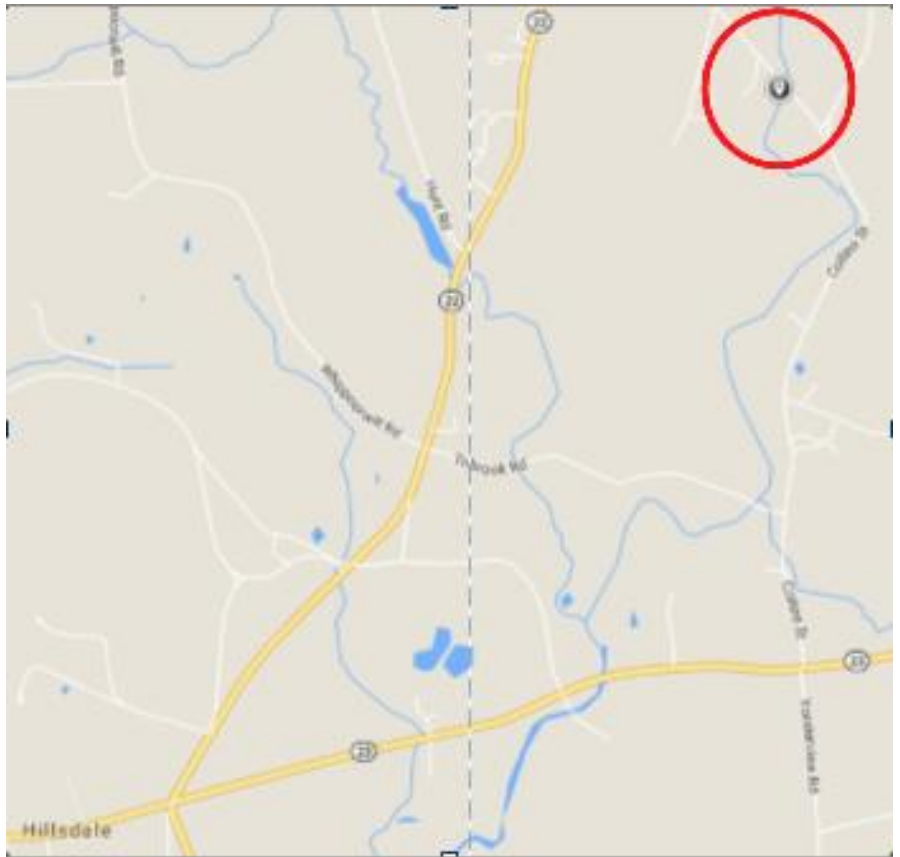
### RJ-43.30 Hillsdale- Collins Street Extension

This site is located about six miles downstream of the headwaters of the Roe Jan Kill. Between the stream's source and this site, much of the riparian area is cleared for agricultural use.

**GPS:** 1040 Collins St Ext Hillsdale

**Parking & Access:** There is pull-off on the south side of the road just west of the bridge. Be sure to sample at the bridge on Collins St. *Extension*, not at Collins St.

**Note:** Sample from bridge using the bucket. Property is marked no trespassing.

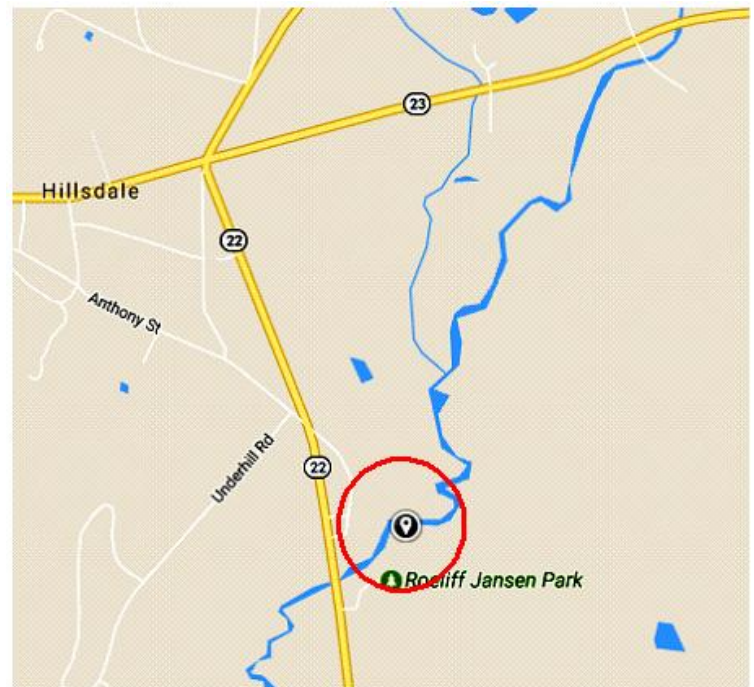


### RJ-40.78 Copake- Roeliff Jansen Park stream access

This sampling site is located in an area where NYS DEC and the Columbia County DOH have noted water quality impacts due to septic systems since at least 1993.

**GPS:** Roe Jan Park Copake

**Parking & Access:** There is a well marked parking lot at the site. Sample just past the far corner of the fenced-in garden. (If you are in the brush, you're not on the right path.) The sampling site is a well maintained grassy area along the stream.



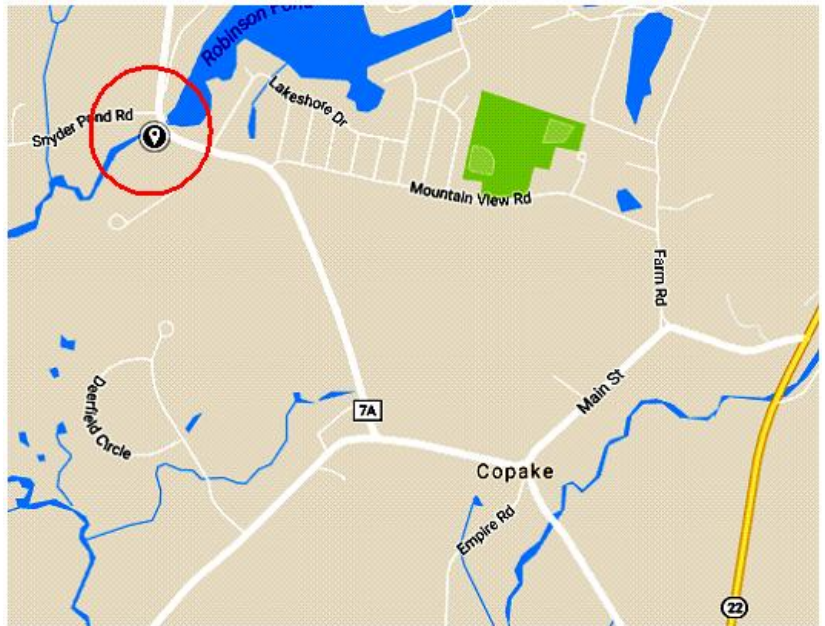
### RJ-37.58 Ancram- Robinson Pond outlet

This sampling point is located in the main stem of the Roe Jan, upstream of the confluence of the Bash Bish Brook, at the outlet of Robinson Pond. Onsite septic systems are thought to be sources of nutrient pollution in Robinson Pond. This is a fishing access location.

**GPS:** County Route 7A & Snyder Pond Rd, Copake

**Parking & Access:** There is limited parking behind the guardrail south of the road, near the bridge.

**Note:** Even though there is a bridge, sampling is easier by walking down to the stream at the end of the parking area, using the dipper.



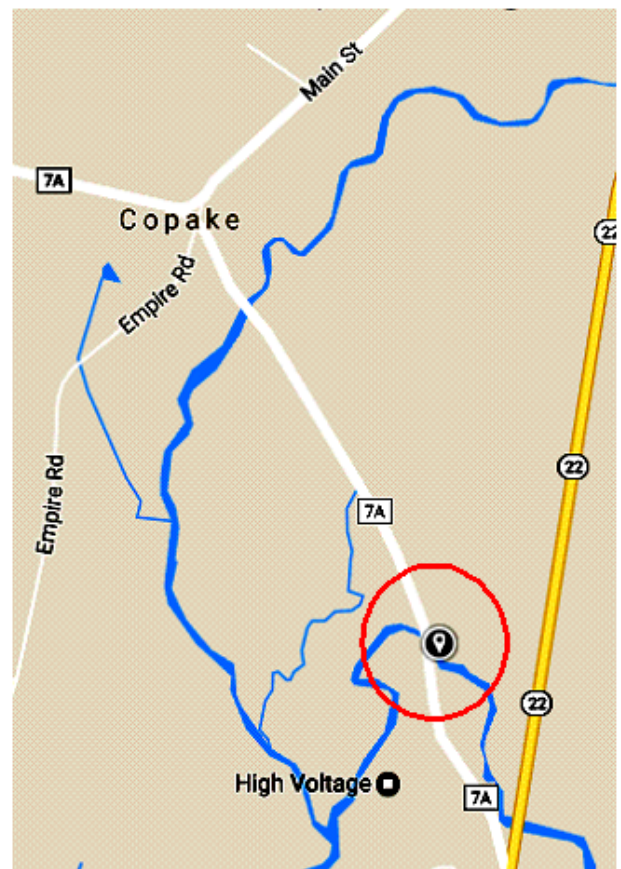
### RJ-NK-0.30 Copake- Noster Kill tributary at Route 7A

This sampling site is located in the Noster Kill, a tributary to the Roe Jan that is a designated trout spawning stream.

**Map:** Find 7A and Rt 22, go N on 7a to the small bridge over the RJ.

**GPS:** “Jim’s auto body Copake”, then about 500 ft south on 7A to a closed garage/car-wash at a small bridge over the Noster Kill.

**Parking & Access:** Park in front of the closed garage/car wash. Walk down to the stream, or sample from the bridge, paying attention to traffic.



### **RJ-31.26 Ancram- Wiltsie Bridge Road fishing access**

This DEC fishing access location sits between the Bash Bish Brook (upstream of here) and the Punch Brook (downstream of here), two of the Roe Jan's major tributaries. There are agricultural operations near this sampling point.

**GPS:** Herondale Farm Ancram

**Parking & Access:** Park on the south side of Wiltsie Bridge Rd.

**Note:** Sample from the downstream side of the bridge using the rope and bucket.



### **RJ-25.22 Ancram- Hall Hill Road Bridge**

Two wastewater treatment plant outfalls (both privately owned) are located less than one mile upstream of this sampling site.

**Note – Sampling instructions changed for 2026.** We have permission from Sky High Farms to use the farm road.

**Map:** Find the intersection of Hall Hill Rd and Rt. 7. Go south on Hall Hill Rd. about 50 yards, where you will see a farm road on the right, in front of the second house on Hall Hill Rd. Go down the farm road (not the house's driveway) about 50 yards (red line).

**GPS:** "County Rt 7 & Hall Hill Rd Ancram".

**Parking & Access:** Park on the left, at the red dot, between the farm road and the bridge. Walk down to the near end of the bridge and go under the bridge to the large rocky bank. Sample from the large rocks under the bridge.

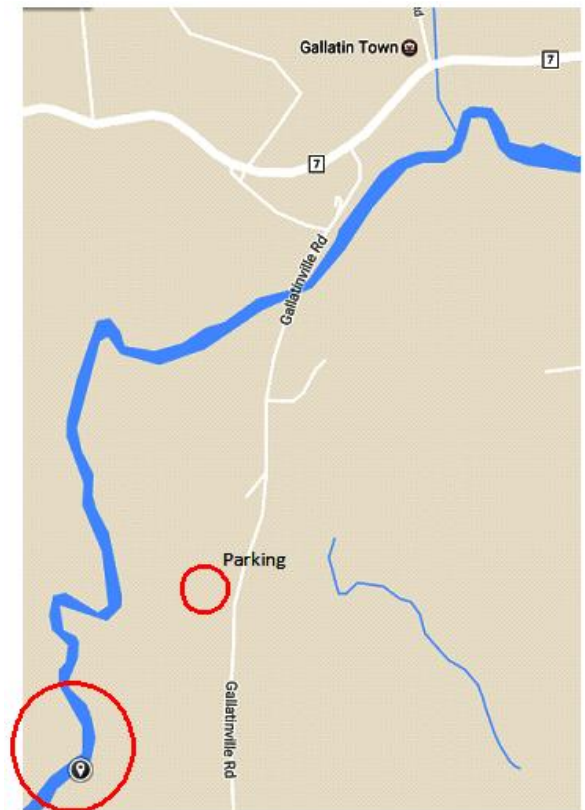


## RJ-22.44 Gallatin Conservation Area

**Map:** Find Gallatinville Rd and Rt 7. Go south on Gallatinville till you see the parking area marked “Gallatin Conservation Area” on the right.

**GPS:** “119 Gallatinville Rd”, then right into parking area marked for “fishing”

**Parking & Access:** Park at the small unpaved lot, and then walk south past the gate into a large downward sloping field along a path that is usually mowed. Near the treeline at the bottom, bear right on a smaller path leading into the woods, leading to the Roe Jan. The Roe Jan bank is steep, find a safe way down and sample with the dipper.

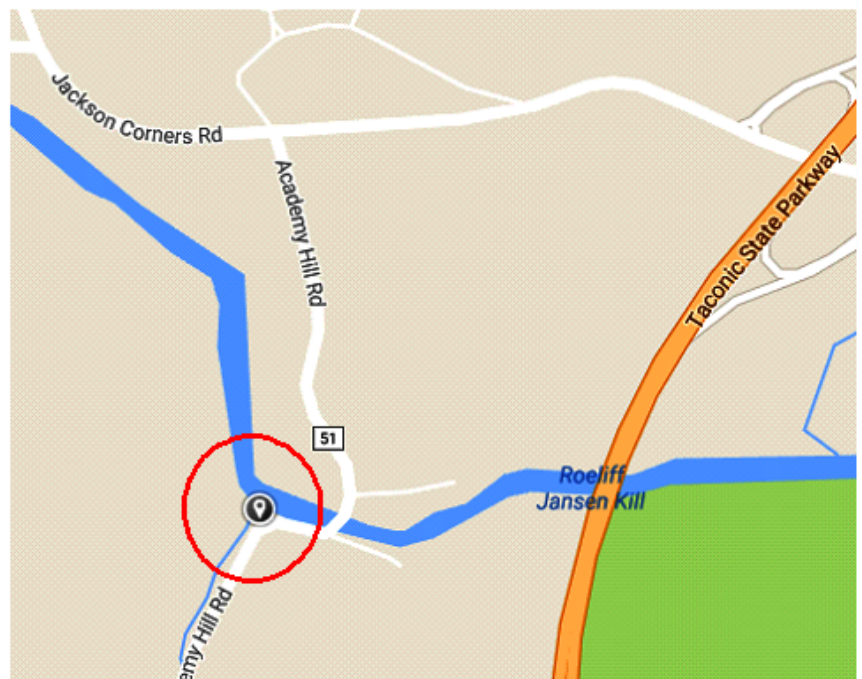


## RJ-17.94 Milan- Academy Hill Road Bridge fishing access


This sampling site is a DEC fishing access site near the Taconic State Parkway. Land cover surrounding this portion of the Roe Jan is forest.

**GPS:** “Jackson Corners Rd & Academy Hill Rd” then south on Academy Hill Rd just over a quarter mile, past the bridge to the pullout area on the left.

**Parking & Access:** There is a rough parking area about 100 yards past (south) the bridge. Walk down the path on the north side of the road. Be careful to sample Roe Jan water flowing under the bridge, not the joining Academy Creek water, coming from the south.



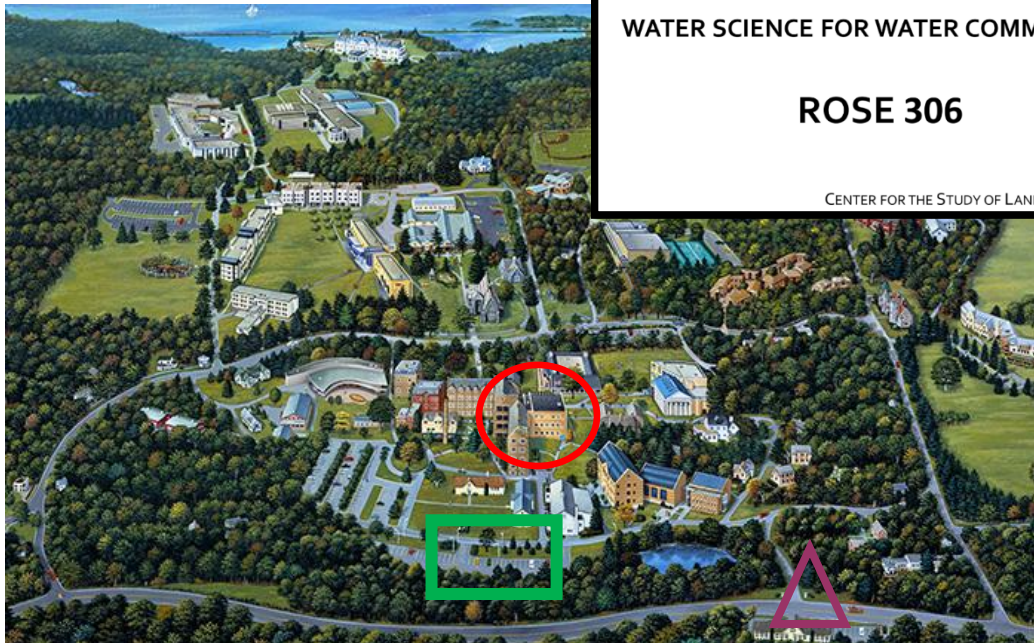


**bard water lab** 

WATER SCIENCE FOR WATER COMMUNITIES

**ROSE 306**

CENTER FOR THE STUDY OF LAND, AIR, AND WATER



Purple triangle—Campus entrance from 9G  
 Green Square—Parking Red circle—Rose Hall